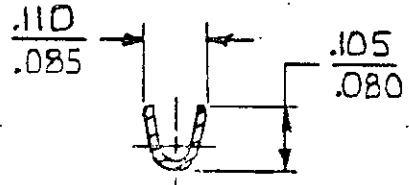
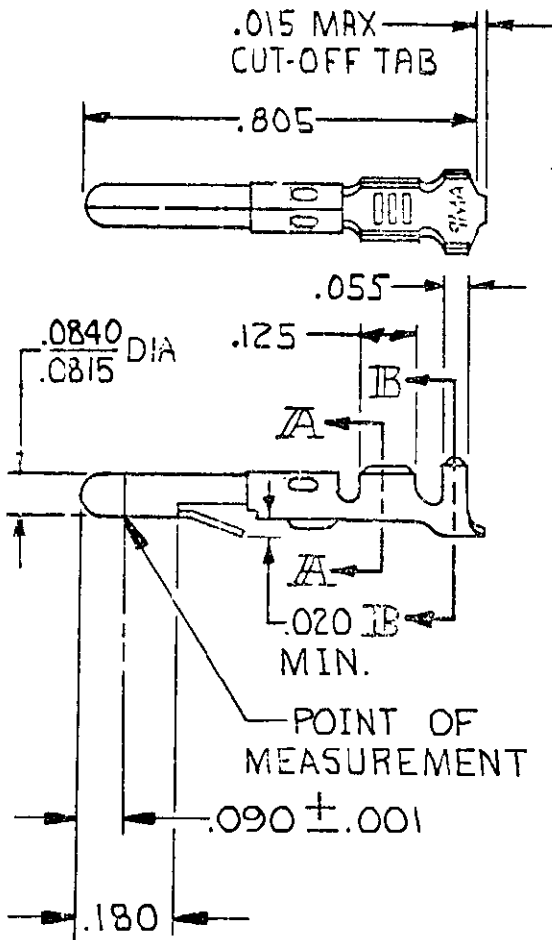
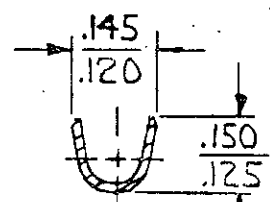


© COPYRIGHT 1965 BY AMP INCORPORATED, HARRISBURG, PA. ALL INTERNATIONAL RIGHTS RESERVED. AMP INCORPORATED PRODUCTS COVERED BY U.S. AND FOREIGN PATENTS AND /OR PATENTS PENDING.

REVISIONS				
LTR	DESCRIPTION	DATE	APPROVED	P F
N	REV PER CM-1734	8-17-88	PKC RS	
P	REVISED PER CM-3285	2-12-91	PKC RS	
R	OBSOLETE -2 PER CM 2708	1-11-93	TB RS	
S	REV PER EC 0730-0142-94	8-15-94	RV RS	



SECT. A-A



SECT. B-B

1 .000030 GOLD INSIDE WIRE BARREL & ON TIP OF PIN; REMAINDER OF CONTACT IS NICKEL PLATED.

2 .000050 NICKEL OVER ENTIRE CONTACT WITH .000030 GOLD OVER MATING AREA.

GOLD	2	.012 PH. BRZ	60613 -6
GOLD	1	BRASS	-5
PRE-TIN		PH. BRZ	-4
PRE-TIN		.012 BRASS	60618-1
FINISH		MATERIAL	PART NO

UNLESS OTHERWISE SPECIFIED DIMENSIONS ARE IN INCHES. TOLERANCES ON: DECIMALS ±.015 ANGLES ±

CONTRACT NO
DR M. FEHER 11-26-79
CHK D. Heide 1/4/80



MATERIAL
SEE TABLE

INSULATION DIA .100 MAX
WIRE RANGE 24-18 AWG.

NAME
PIN, LOOSE PIECE, COMMERCIAL MATE-N-LOK

FINISH
SEE TABLE

INSULATION DIA .100 MAX
WIRE RANGE 24-18 AWG.

SIZE A
CODE IDENT NO 00779
DRAWING NO 60618
SCALE SHEET